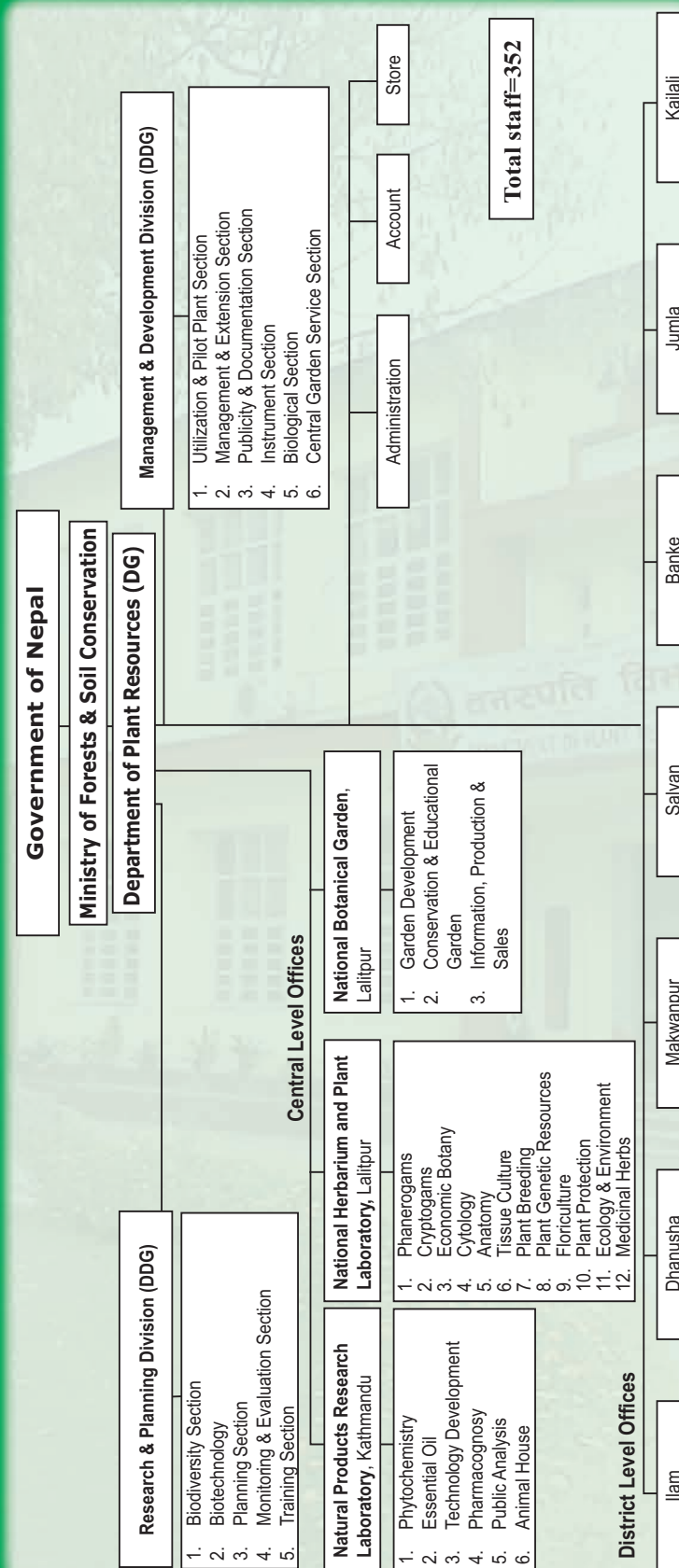


22	गोदावरी फूलको खेती, 1995		6.00
23*	Flora of Nepal, Proceedings of the Dept. of Plant Resources No 1.		
24*	Flora of Nepal, Management Document of the Dept. of Plant Resources No 1.		
25	Flora of Nepal - Annonaceae, Volume 2 Part 20	1.00	28.00
26	Flora of Nepal - Apocynaceae, Volume 5 Part 18	1.00	24.00
27	Flora of Nepal Cornaceae, Volume 5 Part 4	1.00	18.00
28	Flora of Nepal - Fagaceae, Volume 1 Part 20	1.00	16.00
29	Flora of Nepal - Thymelaeaceae, Volume 4 Part 54.	1.00	21.00
30	Fungi of Nepal Part - 2 Mastigomycotina, Zygomycotina & Ascomycotina. Bull. Dept. Pl. Res. 16.	5.50	120.00
31	Flora of Nepal - Malvaceae Volume 4, Part 32 (Pub. 2000)		40.35
32	Flora of Nepal - Meleastomataceae Volume 4 Part 6 (Pub. 2000)		32.50
33	Flora of Nepal - Bombacaceae Volume 4 Part 33 (Pub. 2000)		12.50
34	Flora of Nepal - Stachyuraceae Volume 4 Part 47 (Pub.2000)		12.50
35	Enumeration of Vascular plants of West Nepal in Bull. Dept. Med. Pl.No.12	5.00	100.00
36	Fungi of Nepal Part III Deuteromycotina (Pub. 2001)		
37	Flora of Nepal- Oxalidaceae Volume 4 Part 1 (Pub.2001)		21.00
38	Flora of Nepal- Aceraceae Volume 4 Part 23(Pub.2001)		35.00
39	Flora of Nepal- Sabiaceae Volume 4 Part 26 (Pub.2001)		21.00
40	Flowering plants of Nepal (Phanerogams) (Pub. 2001)		585
41	Index seminum		
42	Flora of Nepal- Alangiaceae		
43	Flora of Nepal- Dipterocarpaceae		
44	Flora of Nepal- Hippocastanaceae		
45	Flora of Nepal- Sapindaceae		
46	Flora of Nepal- Staphyleaceae		
47	Flora of Nepal- Linaceae		
48	Flora of Nepal- Caesalpinaceae		
49	Flora of Nepal – Capparaceae		
50	Flora of Nepal- Caprifoliaceae		
51	Flora of Nepal- Hypericaceae		
52	Flora of Nepal- Symplocaceae		
53	Flora of Nepal- Ulmaceae		
54	Fungi of Lalitpur, Bull. of DPR No.20 (2003)		
55	Flora of Royal Botanical Garden (Phenerogams) Bull. of DPR No.21 (2003)		
56	जडिवुटी संकलन, संरक्षण, सर्व्वद्वन विधि, जडिवुटी परिचयमाला १, २ र ३ (Reprint)		
57	जडिवुटी संकलन, संरक्षण, सर्व्वद्वन विधि, जडिवुटी परिचयमाला ४		
58	जडिवुटी संकलन, संरक्षण, सर्व्वद्वन विधि, जडिवुटी परिचयमाला ५		
59	Plant Resources (Occasional Publication) 2003 Bull. Dept. Pl. Rs. No. 22		
60	Wood Anatomy of the Family Fagaceae Bull. Dept. Pl. Rs. No. 23		
61	Research on Plant Tissue Culture Bull. Dept. Pl. Rs. No. 24		
62	Plant Resources (Occasional Publication) 2004 Bull. Dept. Pl. Rs. No. 25		
63	Plant Resources (Occasional Publication) 2005 Bull. Dept. Pl. Rs. No. 26		
64	Medicinal Plants of Nepal (Revised)		
65	Flora of Nepal Fascicle (Morinaceae)	271/-	
66	Flora of Nepal Fascicle (Passifloraceae, Setariaceae, Toricelliaceae)		
67	Endemic Flowering Plants of Nepal Part I		
68	Endemic Flowering Plants of Nepal Part II		
69	Plant Resources (Scientific Publication) 2006 Bull. Dept. Pl. Res. No. 28		
70	Plant Resources (Scientific Publication) 2007 Bull. Dept. Pl. Res. No. 29		
71	Plant Resources (Scientific Publication) 2008 Bull. Dept. Pl. Res. No. 30		
72	Plant Resources (Scientific Publication) 2009 Bull. Dept. Pl. Res. No. 31		
73	नेपालको आर्थिक विकासका लागि प्राथमिकता प्राप्त जडीवुटीहरू		
74	Plant Resources (Scientific Publication) 2010 Bull. Dept. Pl. Res. No. 32		
75	Plant Resources (Scientific Publication) 2011 Bull. Dept. Pl. Res. No. 33		
76	Quality Standard, Good Agricultural and Collection Practices <i>Zanthoxylum armatum</i> DC 2011		
77	Quality Standard, Good Agricultural and Collection Practices <i>Valeriana jatamansii</i> Jones 2012		
78	Quality Standard, Good Agricultural and Collection Practices <i>Swertia chirayita</i>		
79	Catalogue of Nepalese Flowering Plants Vol.I		
80	Catalogue of Nepalese Flowering Plants Vol.II		
81	Catalogue of Nepalese Flowering Plants Vol.III		
82	Plants of Nepal: Fact Sheet 2012		
83	Endemic Plants of Nepal Part III		
84	Plant Resources (Scientific Publication) 2012 Bull. Dept. Pl. Res. No. 34		
85	Plant Resources (Scientific Publication) 2013 Bull. Dept. Pl. Res. No. 35		
86	Quality Standard, Good Agricultural and Collection Practices of <i>Rauvolfia serpentina</i> (L.) Benth. Ex kurz. 2013		
87	Plant Resources (Scientific Publication) 2014 Bull. Dept. Pl. Res. No. 36		

\* Out of Print



# Department of Plant Resources



*Rhododendron thomsonii* Hook. f.



Government of Nepal  
Ministry of Forests and Soil Conservation  
**Department of Plant Resources**  
Thapathali, Kathmandu, Nepal  
2014

G.P.O. Box 2270, Kathmandu, Nepal  
Tel: 4251159, 4251160, 4261966, 4261967 Fax: 977-1-251141  
Website: www.dpr.gov.np  
Email: info@dpr.gov.np, department\_plantresources@yahoo.com



## DEPARTMENT OF PLANT RESOURCES

The Department of Plant Resources under the Ministry of Forests and Soil Conservation (formerly known as Department of Medicinal Plants) was established in 1960 A.D. This organization is conducting and providing services in the field of research and development of plant resources in Nepal. It is a multidisciplinary organization comprising mainly of botanists, chemists, pharmacists and veterinary practitioners.

Objectives and activities:

- Resource survey and collection of plant materials and preservation of the specimens in the National Herbarium and Plant Laboratories.
- Identification and certification of plant and its products (KATH)
- Establishment and maintenance of Botanical Gardens in different physiographic regions of the country for ex-situ and in-situ conservation of rare, endangered, threatened, medicinal plants.
- Technical support for sustainable utilization of plant resources through cultivation and processing; floriculture and landscaping
- Chemical and Biological researches for the utilization of medicinal, aromatic and other valuable plants.
- Biotechnology research, improvement and propagation of plants of economic value.
- Agro-technology development of important and medicinal plants to provide services to the farmers on techniques of commercial cultivation.
- Conduction of trainings on resource (plant) conservation, management and provide garden services.
- Information dissemination through publications on various aspects of Nepalese plant resources.
- Bio-prospecting of plants of economic value.
- Library service for public, researcher, policy maker and all concerned.



The Department has two divisions, three central level offices, seven district offices and thirteen botanical gardens.

**1. Research and Planning Division** responsible to formulate research and management plan for research and development of diverse plant resources of the country.



**2. Management and Development Division** responsible for application of research for sustainable utilization, development of plant resources of the country.

### Ongoing Programs

- Plant Study & Research
- Plant Conservation & Garden Development
- Plant Utilization & Trade Promotion
- Herbal Development
- Chure Conservation Program

DPR also functions as the following

- CITES CELL: National Scientific Authority of plant resources on Convention on International Trade in Endangered Species of Wild Fauna & Flora (CITES). 14 plant species have been listed under CITES Appendices I, II and III.



*Spathoglottis ixiodis*

- National focal point of Global Taxonomic Initiative (GTI)
- National focal point of Bio-safety
- Secretariat of Herbs & NTFPs Coordination Committee (HNCC): 30 species of medicinal plants have been prioritized for economic development of Nepal, among these 12 species have been prioritized for agro-technology development.

Three Central Level Offices

### Natural Products Research Laboratory, Thapathali

This laboratory provides services to the public for industrial product development of plant origin and certification. Currently its main focus is on plant chemistry aiming for R&D activities.

### Natural Products Research Laboratory

Thapathali, Kathmandu, PO Box 2270

Tel: 977-01-4268247, 4266856

E-mail: nprl@dpr.gov.np



### National Herbarium and Plant Laboratories

Established in 1961 as a full government undertaking, the Botanical Survey and Herbarium - now called as National Herbarium and Plant Laboratories (NHPL) aims to support the nation building through R&D on the diverse plant resources of the country. This is the



*Anemone polyanthes*-herbrium

only institution having the mandate of conducting country-wise exploration, collection, preservation and housing of dried plant specimens called as Herbarium. Collected by both Nepali and International researchers over a long period of time, NHPL has so far been able to house over hundred thousands mounted specimens, some of which have been received as gift from other institutions. Additionally there are over 50,000 specimens awaiting mounting.

### National Herbarium and Plant Laboratories

Godawari, Lalitpur, PO Box 3708

Tel: 977-01-5560977, 5560547, Fax: 977-01-5560549

E-mail: nhpl@dpr.gov.np

### National Botanical Garden

Established in 1962, this garden serves mainly the purpose of Scientific Research, Collection and Conservation of living plants, display and education. Located at the foothill of Phulchoki, the garden spreads over an area of 82 ha. more than 550 different species of plants are conserved in the garden. 107 genera and 450 species of orchids have been reported from Nepal. 42 species of orchids including 26 medicinal species are conserved in this botanical garden.



### National Botanical Garden

Godawari, Lalitpur, PO Box 3708

Tel: 977-01-5560779, 5560546, Fax: 977-01-5560779

E-mail: nbg@dpr.gov.np, nbng@gmail.com

### District Offices

- ❖ District Plant Resource Office, Ilam, Phone no. 027-520564
- ❖ District Plant Resource Office, Dhanusa, Phone: 041-530168, 041-522001 (Fax)
- ❖ District Plant Resource Office, Makwanpur, Phone: 057-520829, 523005
- ❖ District Plant Resource Office, Banke, Phone: 081-523523
- ❖ District Plant Resource Office, Salyan, Phone: 088-529107, 692865
- ❖ District Plant Resource Office, Jumla, Phone: 087-690009, 087-520015 (Fax)
- ❖ District Plant Resource Office, Kailali, Phone: 091-524888, 091-522920 (Fax)

### Other Botanical Gardens

- Maipokhari Botanical Garden, Ilam
- Dhanusha Botanical Garden, Dhanushadham, Dhanusha
- Vrindaban Botanical Garden, Hetauda, Makwanpur
- Daman Botanical Garden (Mountain Botanical Garden), Daman, Makwanpur
- Tistung Botanical Garden, Tistung, Makwanpur
- Dhakeri Botanical Garden, Banke
- Mulpani Botanical Garden, Kapurkot, Salyan
- Dhitachaur Botanical Garden, Jumla
- Godavari Botanical Garden, Godavari, Kailali
- Devoriya Botanical Garden, Kailali
- World Peace Biodiversity Botanical Garden, Raniban, Pokhara. Established in 2013 as per Nepal government (Secretary level) decision dated 2070/8/18



*Paris polyphylla*

## Department of Plant Resources

### Publications and Price List

S.N.	Name of Publication	US\$	NRs
1	Keys to the Dicot Genera in Nepal Part I (Polypetalae).	2.00	65.00
2	Keys to the Dicot Genera in Nepal Part II (Gempetalae and Monochlamydeae)	2.00	55.00
3	Keys to the Pteridophytes, Gymnosperms and Monocotyledonous genera of Nepal.	5.00	13.00
4*	Notes on Flora of Rajnikunj (Gokarna Forest), in Bull. Dept. Med. Pl. No.1.		
5	Flora of Phulchoki and Godawari, in Bull. Dept. Med. Pl.No.2.	3.00	50.00
6	Wild edible plants of Nepal, in Bull. Dept. Med. Pl. No 9	2.00	80.00
7	Medicinal Plants of Nepal, in Bull. Dept. Med. Pl.No.3.	8.00	170.00
8*	Flora of Nagarjun, in Bull. Dept. Med. Pl. No.4.		
9	Supplement to the Flora of Phulchoki and Godawari. in Bull. Dept. Med. Pl. No 5	1.00	5.00
10	Flora of Langtang and cross Section Vegetation Survey (Central Zone), in Bull. Dept. 10. Med. Pl. No.6.	10.00	215.00
11	Catalogue of Nepalese Vascular Plants, in Bull. Dept. Med. Pl. No 7	5.00	35.00
12	नेपाली खाद्य कन्दमूलहरू, वनस्पति विभाग, बुलेटिन नं. ८		50.00
13	Medicinal Plants of Nepal, Supplement Volume in Bull. Dept. Med. Pl. No.10.	4.00	80.00
14	Flora of Kathmandu Valley, in Bull Dept. Med. Pl. No 11	100	1450
15	Royal Botanical Garden, Godawari.	1.00	10.00
16	Flora of Nepal - Theaceae, Volume 4 Part 39	1.00	40.00
17	Flora of Nepal - Myrsinaceae, Volume 5 Part 7	1.00	40.00
18	Flora of Nepal - Magnoliaceae, Volume 2 Part 17	1.00	40.00
19	Fungi of Nepal. Part I, Historical Review and Myxomycotina, in Bull. Dept. Med. Pl. No. 13	2.00	55.00
20	Medicinal Plants of Nepal for Ayurvedic drugs, 1995	20.00	800.00
21	Abstracts Tissue Culture, in bull. Dept. Pl. Res. No 14.	3.00	90.00